

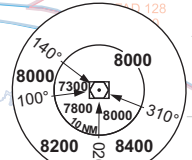
**INSTRUMENT APPROACH CHART** **AERODROME ELEV 4521'**  
 HEIGHTS RELATED TO THR RWY 07 - ELEV 4521'

FALA APN: 122.85 JOHANNESBURG APP S: 124.50  
 SMC: 121.65 E: 124.50  
 TWR: 124.00 W: 123.70  
 ATIS: 127.65 SMC: 121.90

**LANSERIA INTL**  
**VOR Z RWY 07**  
**STRAIGHT-IN**  
**CAT A - D**

**ELEV, ALT & HGT IN FEET**  
 DIST IN NM  
 BRG ARE MAG  
 VAR 18°W (2015)

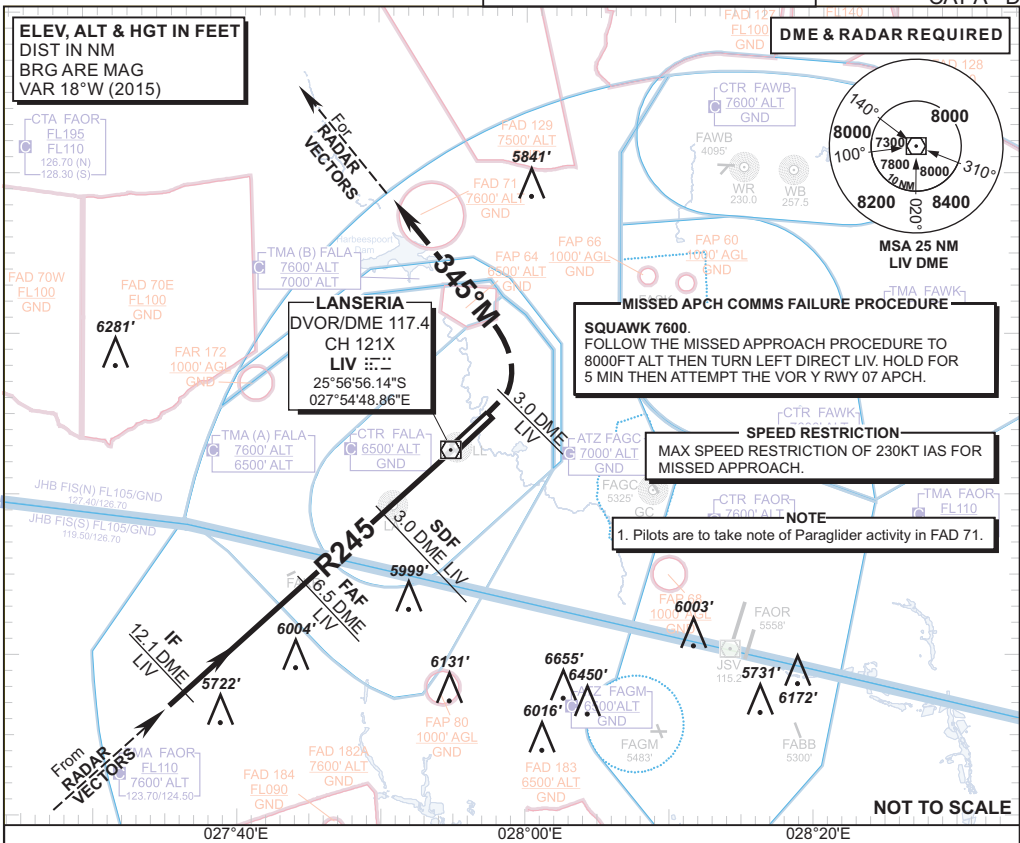
**DME & RADAR REQUIRED**



**MISSED APCH COMMS FAILURE PROCEDURE**  
**SQUAWK 7600.**  
 FOLLOW THE MISSED APPROACH PROCEDURE TO 8000FT ALT THEN TURN LEFT DIRECT LIV. HOLD FOR 5 MIN THEN ATTEMPT THE VOR Y RWY 07 APCH.

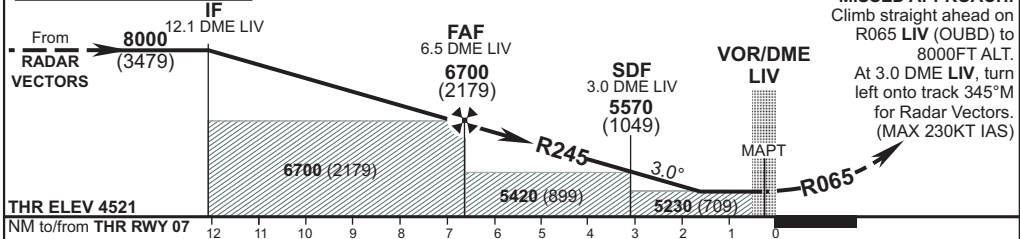
**SPEED RESTRICTION**  
 MAX SPEED RESTRICTION OF 230KT IAS FOR MISSED APPROACH.

**NOTE**  
 1. Pilots are to take note of Paraglider activity in FAD 71.



LIV DME	6	5	4	3	2	1
ADVISORY ALT (HGT)	6530 (2009)	6210 (1689)	5890 (1369)	5570 (1049)	5250 (729)	5230 (709)

TRANSITION ALT 8000  
 TRANSITION LEVEL ATC  
 MINA ALT: via RADAR VECTORS



THR ELEV 4521 NM to/from THR RWY 07		12	11	10	9	8	7	6	5	4	3	2	1	0										
OCA (H)		A				B				C				D				GS	KT	80	100	120	140	160
Straight-in Approach	With 2.5% Missed APCH Gradient	5880 (1359)														FAF to THR	M:S	4:58	3:59	3:19	2:50	2:29		
	With 4.5% Missed APCH Gradient	5230 (709)														Rate of descent	FPM	427	533	640	746	853		
Circling (HGT Related to AD ELEV)		5320 (799)				5930 (1409)				PROHIBITED				NOTE: 1. Rate of descent from FAF equivalent to 3°. 2. All circling approaches to land southeast of RWY 07/25 and entirely at the discretion of the pilot in command. 3. CAT D Circling prohibited. 4. No turns before MAPT. 5. Advise ATC of an intention to divert in the event of a missed approach.										

CHANGE: HBV Decommissioned